



Public Bidding No. PB25-18

Reference No. 11827807

STF-2025

Bid Supplement PB25-18-1

CONSTRUCTION OF WATER SUPPLY AT JHCSC PAGADIAN CAMPUS

March 14, 2025

VISION

Leading higher education institution serving the ASEAN community with quality, innovative and culture-sensitive programs

MISSION

- Provides need-based tertiary and advanced programs in Agriculture, Education and allied fields;
- Undertakes applied research, extension and production services that yield - workable and durable solutions to sector specific challenges, thus improving the socio-economic well-being of identified communities

CORE VALUES

- Justice, Peace and Unity
- Hope, Honesty and Humility
- Credibility and Integrity
- Social Responsibility and Interfaith Dialogue
- Collaboration and Shared Competence

Original	Amendment/ Clarification/Addendum
Section I. Invitation to Bid	Section I. Invitation to Bid
Project Title: CONSTRUCTION OF WATER SUPPLY AT JHCSC PAGADIAN CAMPUS 1. J. H. Cerilles State College, through the STF 2025 (Fund 164) intends to apply the sum of ONE MILLION SEVENTY-FOUR THOUSAND PESOS ONLY. (Php 1,074,000.00) being the Approved Budget for the Contract (ABC) to payments under the contract for CONSTRUCTION OF WATER SUPPLY AT JHCSC PAGADIAN CAMPUS. Bids received in excess of the ABC shall be automatically rejected.	CONSTRUCTION OF REINFORCED CONCRETE WATER TANK STAND AT JHCSC PAGADIAN CAMPUS 1. J. H. Cerilles State College, through the STF 2025 (Fund 164) intends to apply the sum of ONE MILLION SEVENTY-FOUR THOUSAND PESOS ONLY. (Php 1,074,000.00) being the Approved Budget for the Contract (ABC) to payments under the contract for CONSTRUCTION OF REINFORCED CONCRETE WATER TANK STAND AT JHCSC PAGADIAN CAMPUS . Bids received in excess of the ABC shall be automatically rejected.
Section II. Instructions to Bidders	Section II. Instructions to Bidders
1. Scope of Bid The Procuring Entity, J. H. Cerilles State College wishes to receive Bids for the project: CONSTRUCTION OF WATER SUPPLY AT JHCSC PAGADIAN CAMPUS with Identification Number PB25-18.	1. Scope of Bid The Procuring Entity, J. H. Cerilles State College wishes to receive Bids for the project CONSTRUCTION OF REINFORCED CONCRETE WATER TANK STAND AT JHCSC PAGADIAN CAMPUS with Identification Number PB25-18.
Section III. Bid Data Sheet	Section III. Bid Data Sheet
a. Similar Contract: CONSTRUCTION OF WATER SUPPLY AT JHCSC PAGADIAN CAMPUS	a. Similar Contract: CONSTRUCTION OF WATER SUPPLY AT JHCSC PAGADIAN CAMPUS/ CONSTRUCTION OF REINFORCED CONCRETE WATER TANK STAND AT JHCSC PAGADIAN CAMPUS
Section VI. Specifications	Section VI. Specifications
Project Title: CONSTRUCTION OF WATER SUPPLY STRUCTURE AT JHCSC PAGADIAN CAMPUS	Project Title: CONSTRUCTION OF REINFORCED CONCRETE WATER TANK STAND AT JHCSC PAGADIAN CAMPUS



VISION

Leading higher education institution serving the ASEAN community with quality, innovative and culture-sensitive programs

MISSION

- Provides need-based tertiary and advanced programs in Agriculture, Education and allied fields;
- Undertakes applied research, extension and production services that yield - workable and durable solutions to sector specific challenges, thus improving the socio-economic well-being of identified communities

CORE VALUES

- Justice, Peace and Unity
- Hope, Honesty and Humility
- Credibility and Integrity
- Social Responsibility and Interfaith Dialogue
- Collaboration and Shared Competence

Section VII. Drawings

Amendment/ Clarification/Addendum

SITE DEVELOPMENT PLAN
SCALE: @ 1:1000

PERSPECTIVE VIEW

REPUBLIC OF THE PHILIPPINES OFFICE OF THE MUNICIPAL/CITY ENGINEER/ BUILDING OFFICIAL	
DISTRICT/CITY/MUNICIPALITY	
LAND USE & ZONING:	
LINE & GRADE:	
ARCHITECTURAL:	
STRUCTURAL:	
ELECTRICAL:	
PLUMBING:	
FIRE AND SAFETY:	
MECHANICAL:	
NOTED:	
DRAWN BY: ASAYOR	
APPROVED:	
PROJECT TITLE: CONSTRUCTION OF REINFORCED CONCRETE WATER TANK STAND AT JHCSC PAGADIAN CAMPUS	DATE: _____
DESIGNED BY: REYMARK E. CALAGO, CE PDC-1	DATE: _____
CHECKED AND SUBMITTED BY: PANGASIA M. MAMINTAS, CE COLLEGE ENGINEER	DATE: _____
ENGINEERING APPROVAL: CLEODOR R. BARRERA, JR., PH.D. PLANNING AND DEVELOPMENT DIRECTOR	DATE: _____
APPROVED: EDGARDO H. ROSALES, Ed.D. JHCSC- PRESIDENT	DATE: _____
DRAWN BY: AS SHOWN	DRAWING NO: A-1
	1 / 3

FLOOR PLAN
SCALE: TO 1:40MTS

FRONT ELEVATION
SCALE: TO 1:70MTS

REAR ELEVATION
SCALE: TO 1:70MTS

16mm Ø PLAIN BAR FOR STAIR

PROJECT TITLE: CONSTRUCTION OF REINFORCED CONCRETE WATER TANK STAND AT JHCSC PAGADIAN CAMPUS	DATE: _____
DESIGNED BY: REYMARK E. CALAGO, CE PDC-1	DATE: _____
CHECKED AND SUBMITTED BY: PANGASIA M. MAMINTAS, CE COLLEGE ENGINEER	DATE: _____
ENGINEERING APPROVAL: CLEODOR R. BARRERA, JR., PH.D. PLANNING AND DEVELOPMENT DIRECTOR	DATE: _____
APPROVED: EDGARDO H. ROSALES, Ed.D. JHCSC- PRESIDENT	DATE: _____
DRAWN BY: AS SHOWN	DRAWING NO: A-2
	2 / 3



VISION

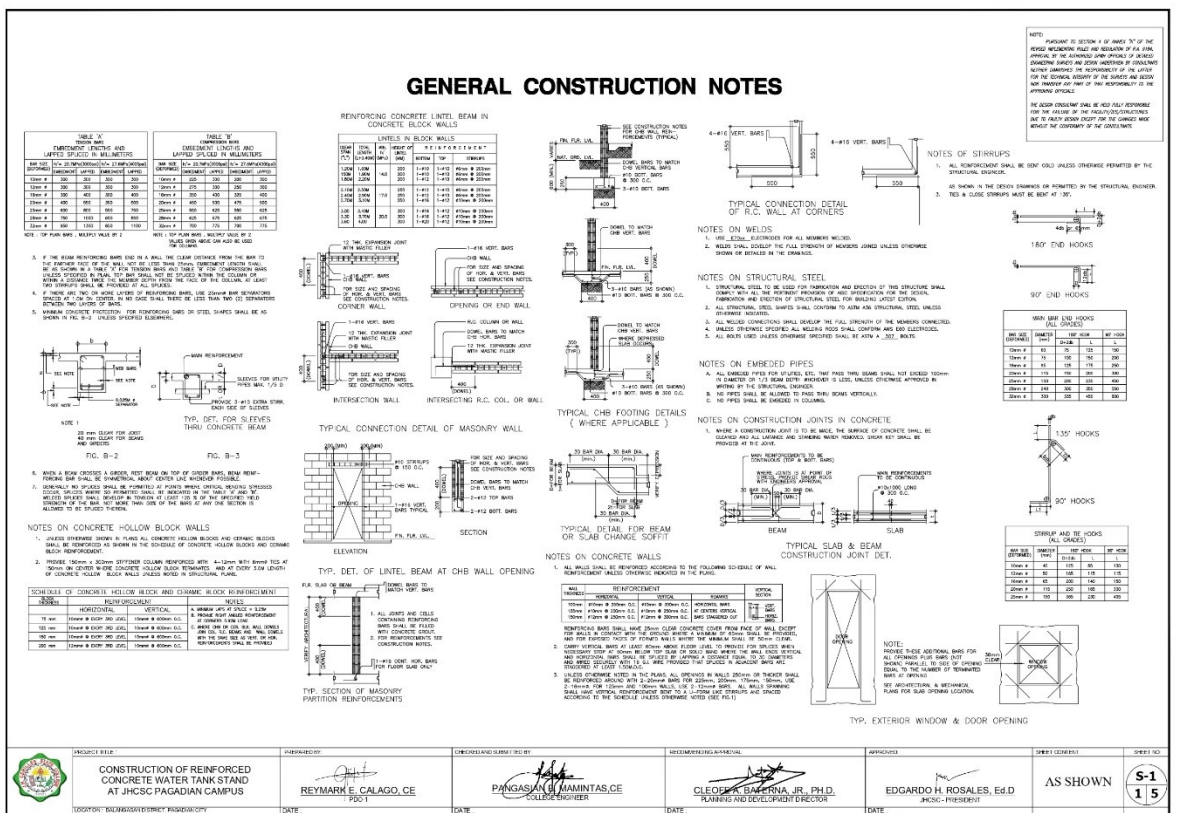
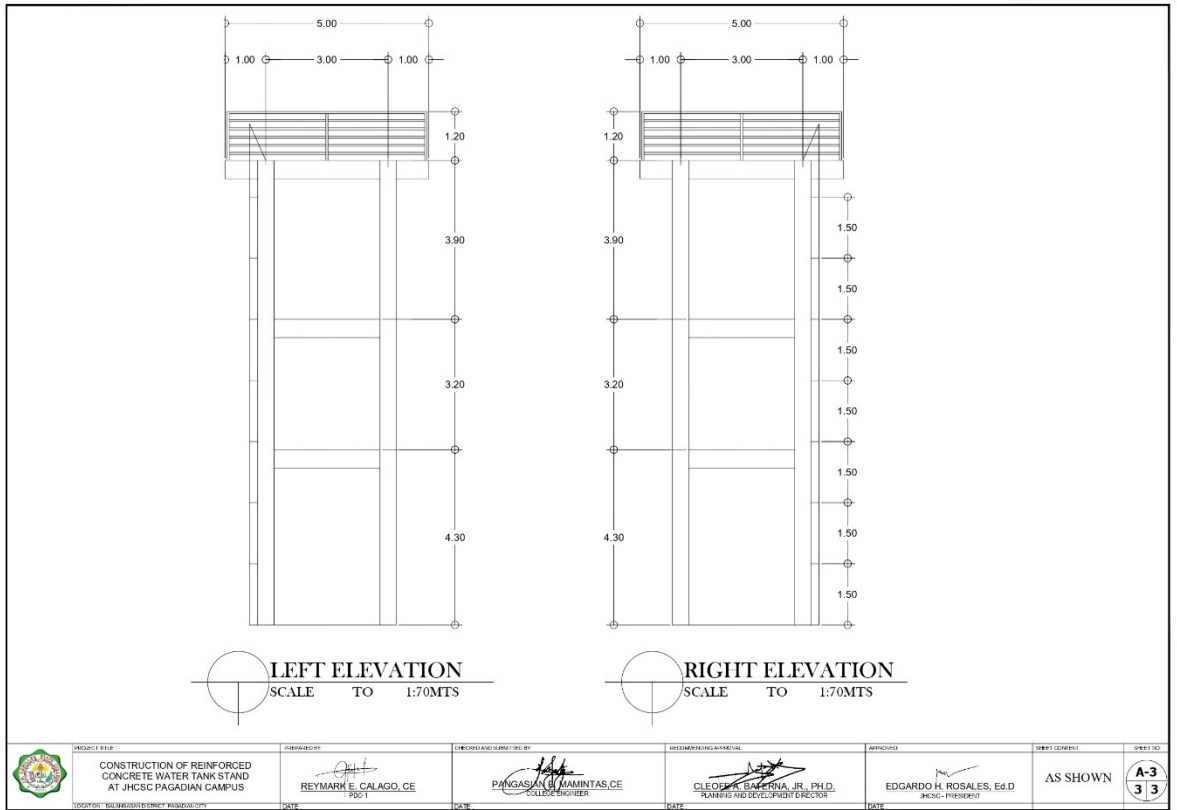
Leading higher education institution serving the ASEAN community with quality, innovative and culture-sensitive programs

MISSION

- Provides need-based tertiary and advanced programs in Agriculture, Education and allied fields;
- Undertakes applied research, extension and production services that yield - workable and durable solutions to sector specific challenges, thus improving the socio-economic well-being of identified communities

CORE VALUES

- Justice, Peace and Unity
- Hope, Honesty and Humility
- Credibility and Integrity
- Social Responsibility and Interfaith Dialogue
- Collaboration and Shared Competence





VISION

Leading higher education institution serving the ASEAN community with quality, innovative and culture-sensitive programs

MISSION

- Provides need-based tertiary and advanced programs in Agriculture, Education and allied fields;
- Undertakes applied research, extension and production services that yield - workable and durable solutions to sector specific challenges, thus improving the socio-economic well-being of identified communities

CORE VALUES

- Justice, Peace and Unity
- Hope, Honesty and Humility
- Credibility and Integrity
- Social Responsibility and Interfaith Dialogue
- Collaboration and Shared Competence

GENERAL CONSTRUCTION NOTES

GENERAL NOTES

1.0 SHOWN AND REPRODUCED

1.1 THE FOLLOWING SHALL COVER THE DESIGN, FABRICATION AND CONSTRUCTION OF THE PROJECT:

1.2 MATERIALS SHALL CONFORM TO THE SPECIFICATIONS INDICATED IN VOL. 1, WITH EXCEPT:

2.0 DESIGN CRITERIA

2.1 DESIGN BASIS

2.2 DESIGN BASIS

3.0 MATERIALS

3.1 CONCRETE

3.2 REINFORCING STEEL

3.3 WELDING

3.4 WOOD

3.5 PAINTS

3.6 SPECIAL PAINTS

3.7 OTHER MATERIALS

4.0 DIMENSIONS

4.1 DIMENSIONS SHALL BE AS SHOWN UNLESS OTHERWISE SPECIFIED.

4.2 DIMENSIONS SHALL BE AS SHOWN UNLESS OTHERWISE SPECIFIED.

4.3 DIMENSIONS SHALL BE AS SHOWN UNLESS OTHERWISE SPECIFIED.

4.4 DIMENSIONS SHALL BE AS SHOWN UNLESS OTHERWISE SPECIFIED.

4.5 DIMENSIONS SHALL BE AS SHOWN UNLESS OTHERWISE SPECIFIED.

4.6 DIMENSIONS SHALL BE AS SHOWN UNLESS OTHERWISE SPECIFIED.

4.7 DIMENSIONS SHALL BE AS SHOWN UNLESS OTHERWISE SPECIFIED.

4.8 DIMENSIONS SHALL BE AS SHOWN UNLESS OTHERWISE SPECIFIED.

4.9 DIMENSIONS SHALL BE AS SHOWN UNLESS OTHERWISE SPECIFIED.

4.10 DIMENSIONS SHALL BE AS SHOWN UNLESS OTHERWISE SPECIFIED.

4.11 DIMENSIONS SHALL BE AS SHOWN UNLESS OTHERWISE SPECIFIED.

4.12 DIMENSIONS SHALL BE AS SHOWN UNLESS OTHERWISE SPECIFIED.

4.13 DIMENSIONS SHALL BE AS SHOWN UNLESS OTHERWISE SPECIFIED.

4.14 DIMENSIONS SHALL BE AS SHOWN UNLESS OTHERWISE SPECIFIED.

4.15 DIMENSIONS SHALL BE AS SHOWN UNLESS OTHERWISE SPECIFIED.

4.16 DIMENSIONS SHALL BE AS SHOWN UNLESS OTHERWISE SPECIFIED.

4.17 DIMENSIONS SHALL BE AS SHOWN UNLESS OTHERWISE SPECIFIED.

4.18 DIMENSIONS SHALL BE AS SHOWN UNLESS OTHERWISE SPECIFIED.

4.19 DIMENSIONS SHALL BE AS SHOWN UNLESS OTHERWISE SPECIFIED.

4.20 DIMENSIONS SHALL BE AS SHOWN UNLESS OTHERWISE SPECIFIED.

4.21 DIMENSIONS SHALL BE AS SHOWN UNLESS OTHERWISE SPECIFIED.

4.22 DIMENSIONS SHALL BE AS SHOWN UNLESS OTHERWISE SPECIFIED.

4.23 DIMENSIONS SHALL BE AS SHOWN UNLESS OTHERWISE SPECIFIED.

4.24 DIMENSIONS SHALL BE AS SHOWN UNLESS OTHERWISE SPECIFIED.

4.25 DIMENSIONS SHALL BE AS SHOWN UNLESS OTHERWISE SPECIFIED.

NOTES ON CONCRETE MIXES & PLACING

1. CONCRETE SHALL BE READY MIXED CONCRETE OR PORTLAND CEMENT MORTAR OR READY MIXED CONCRETE OR PORTLAND CEMENT MORTAR.

2. CONCRETE SHALL BE READY MIXED CONCRETE OR PORTLAND CEMENT MORTAR OR READY MIXED CONCRETE OR PORTLAND CEMENT MORTAR.

3. CONCRETE SHALL BE READY MIXED CONCRETE OR PORTLAND CEMENT MORTAR OR READY MIXED CONCRETE OR PORTLAND CEMENT MORTAR.

4. CONCRETE SHALL BE READY MIXED CONCRETE OR PORTLAND CEMENT MORTAR OR READY MIXED CONCRETE OR PORTLAND CEMENT MORTAR.

5. CONCRETE SHALL BE READY MIXED CONCRETE OR PORTLAND CEMENT MORTAR OR READY MIXED CONCRETE OR PORTLAND CEMENT MORTAR.

6. CONCRETE SHALL BE READY MIXED CONCRETE OR PORTLAND CEMENT MORTAR OR READY MIXED CONCRETE OR PORTLAND CEMENT MORTAR.

7. CONCRETE SHALL BE READY MIXED CONCRETE OR PORTLAND CEMENT MORTAR OR READY MIXED CONCRETE OR PORTLAND CEMENT MORTAR.

8. CONCRETE SHALL BE READY MIXED CONCRETE OR PORTLAND CEMENT MORTAR OR READY MIXED CONCRETE OR PORTLAND CEMENT MORTAR.

9. CONCRETE SHALL BE READY MIXED CONCRETE OR PORTLAND CEMENT MORTAR OR READY MIXED CONCRETE OR PORTLAND CEMENT MORTAR.

10. CONCRETE SHALL BE READY MIXED CONCRETE OR PORTLAND CEMENT MORTAR OR READY MIXED CONCRETE OR PORTLAND CEMENT MORTAR.

11. CONCRETE SHALL BE READY MIXED CONCRETE OR PORTLAND CEMENT MORTAR OR READY MIXED CONCRETE OR PORTLAND CEMENT MORTAR.

12. CONCRETE SHALL BE READY MIXED CONCRETE OR PORTLAND CEMENT MORTAR OR READY MIXED CONCRETE OR PORTLAND CEMENT MORTAR.

13. CONCRETE SHALL BE READY MIXED CONCRETE OR PORTLAND CEMENT MORTAR OR READY MIXED CONCRETE OR PORTLAND CEMENT MORTAR.

14. CONCRETE SHALL BE READY MIXED CONCRETE OR PORTLAND CEMENT MORTAR OR READY MIXED CONCRETE OR PORTLAND CEMENT MORTAR.

15. CONCRETE SHALL BE READY MIXED CONCRETE OR PORTLAND CEMENT MORTAR OR READY MIXED CONCRETE OR PORTLAND CEMENT MORTAR.

16. CONCRETE SHALL BE READY MIXED CONCRETE OR PORTLAND CEMENT MORTAR OR READY MIXED CONCRETE OR PORTLAND CEMENT MORTAR.

17. CONCRETE SHALL BE READY MIXED CONCRETE OR PORTLAND CEMENT MORTAR OR READY MIXED CONCRETE OR PORTLAND CEMENT MORTAR.

18. CONCRETE SHALL BE READY MIXED CONCRETE OR PORTLAND CEMENT MORTAR OR READY MIXED CONCRETE OR PORTLAND CEMENT MORTAR.

19. CONCRETE SHALL BE READY MIXED CONCRETE OR PORTLAND CEMENT MORTAR OR READY MIXED CONCRETE OR PORTLAND CEMENT MORTAR.

20. CONCRETE SHALL BE READY MIXED CONCRETE OR PORTLAND CEMENT MORTAR OR READY MIXED CONCRETE OR PORTLAND CEMENT MORTAR.

21. CONCRETE SHALL BE READY MIXED CONCRETE OR PORTLAND CEMENT MORTAR OR READY MIXED CONCRETE OR PORTLAND CEMENT MORTAR.

22. CONCRETE SHALL BE READY MIXED CONCRETE OR PORTLAND CEMENT MORTAR OR READY MIXED CONCRETE OR PORTLAND CEMENT MORTAR.

23. CONCRETE SHALL BE READY MIXED CONCRETE OR PORTLAND CEMENT MORTAR OR READY MIXED CONCRETE OR PORTLAND CEMENT MORTAR.

24. CONCRETE SHALL BE READY MIXED CONCRETE OR PORTLAND CEMENT MORTAR OR READY MIXED CONCRETE OR PORTLAND CEMENT MORTAR.

25. CONCRETE SHALL BE READY MIXED CONCRETE OR PORTLAND CEMENT MORTAR OR READY MIXED CONCRETE OR PORTLAND CEMENT MORTAR.

TYPICAL BAR BENDING AND CUTTING DETAILS FOR SLABS

1. TYPICAL BAR BENDING AND CUTTING DETAILS FOR SLABS.

2. TYPICAL BAR BENDING AND CUTTING DETAILS FOR SLABS.

3. TYPICAL BAR BENDING AND CUTTING DETAILS FOR SLABS.

4. TYPICAL BAR BENDING AND CUTTING DETAILS FOR SLABS.

5. TYPICAL BAR BENDING AND CUTTING DETAILS FOR SLABS.

6. TYPICAL BAR BENDING AND CUTTING DETAILS FOR SLABS.

7. TYPICAL BAR BENDING AND CUTTING DETAILS FOR SLABS.

8. TYPICAL BAR BENDING AND CUTTING DETAILS FOR SLABS.

9. TYPICAL BAR BENDING AND CUTTING DETAILS FOR SLABS.

10. TYPICAL BAR BENDING AND CUTTING DETAILS FOR SLABS.

11. TYPICAL BAR BENDING AND CUTTING DETAILS FOR SLABS.

12. TYPICAL BAR BENDING AND CUTTING DETAILS FOR SLABS.

13. TYPICAL BAR BENDING AND CUTTING DETAILS FOR SLABS.

14. TYPICAL BAR BENDING AND CUTTING DETAILS FOR SLABS.

15. TYPICAL BAR BENDING AND CUTTING DETAILS FOR SLABS.

16. TYPICAL BAR BENDING AND CUTTING DETAILS FOR SLABS.

17. TYPICAL BAR BENDING AND CUTTING DETAILS FOR SLABS.

18. TYPICAL BAR BENDING AND CUTTING DETAILS FOR SLABS.

19. TYPICAL BAR BENDING AND CUTTING DETAILS FOR SLABS.

20. TYPICAL BAR BENDING AND CUTTING DETAILS FOR SLABS.

21. TYPICAL BAR BENDING AND CUTTING DETAILS FOR SLABS.

22. TYPICAL BAR BENDING AND CUTTING DETAILS FOR SLABS.

23. TYPICAL BAR BENDING AND CUTTING DETAILS FOR SLABS.

24. TYPICAL BAR BENDING AND CUTTING DETAILS FOR SLABS.

25. TYPICAL BAR BENDING AND CUTTING DETAILS FOR SLABS.

NOTES ON COLUMN

1. NOTES ON COLUMN.

2. NOTES ON COLUMN.

3. NOTES ON COLUMN.

4. NOTES ON COLUMN.

5. NOTES ON COLUMN.

6. NOTES ON COLUMN.

7. NOTES ON COLUMN.

8. NOTES ON COLUMN.

9. NOTES ON COLUMN.

10. NOTES ON COLUMN.

11. NOTES ON COLUMN.

12. NOTES ON COLUMN.

13. NOTES ON COLUMN.

14. NOTES ON COLUMN.

15. NOTES ON COLUMN.

16. NOTES ON COLUMN.

17. NOTES ON COLUMN.

18. NOTES ON COLUMN.

19. NOTES ON COLUMN.

20. NOTES ON COLUMN.

21. NOTES ON COLUMN.

22. NOTES ON COLUMN.

23. NOTES ON COLUMN.

24. NOTES ON COLUMN.

25. NOTES ON COLUMN.

NOTES ON BEAMS AND GIRDERS

1. NOTES ON BEAMS AND GIRDERS.

2. NOTES ON BEAMS AND GIRDERS.

3. NOTES ON BEAMS AND GIRDERS.

4. NOTES ON BEAMS AND GIRDERS.

5. NOTES ON BEAMS AND GIRDERS.

6. NOTES ON BEAMS AND GIRDERS.

7. NOTES ON BEAMS AND GIRDERS.

8. NOTES ON BEAMS AND GIRDERS.

9. NOTES ON BEAMS AND GIRDERS.

10. NOTES ON BEAMS AND GIRDERS.

11. NOTES ON BEAMS AND GIRDERS.

12. NOTES ON BEAMS AND GIRDERS.

13. NOTES ON BEAMS AND GIRDERS.

14. NOTES ON BEAMS AND GIRDERS.

15. NOTES ON BEAMS AND GIRDERS.

16. NOTES ON BEAMS AND GIRDERS.

17. NOTES ON BEAMS AND GIRDERS.

18. NOTES ON BEAMS AND GIRDERS.

19. NOTES ON BEAMS AND GIRDERS.

20. NOTES ON BEAMS AND GIRDERS.

21. NOTES ON BEAMS AND GIRDERS.

22. NOTES ON BEAMS AND GIRDERS.

23. NOTES ON BEAMS AND GIRDERS.

24. NOTES ON BEAMS AND GIRDERS.

25. NOTES ON BEAMS AND GIRDERS.

NOTES ON FOOTINGS

1. NOTES ON FOOTINGS.

2. NOTES ON FOOTINGS.

3. NOTES ON FOOTINGS.

4. NOTES ON FOOTINGS.

5. NOTES ON FOOTINGS.

6. NOTES ON FOOTINGS.

7. NOTES ON FOOTINGS.

8. NOTES ON FOOTINGS.

9. NOTES ON FOOTINGS.

10. NOTES ON FOOTINGS.

11. NOTES ON FOOTINGS.

12. NOTES ON FOOTINGS.

13. NOTES ON FOOTINGS.

14. NOTES ON FOOTINGS.

15. NOTES ON FOOTINGS.

16. NOTES ON FOOTINGS.

17. NOTES ON FOOTINGS.

18. NOTES ON FOOTINGS.

19. NOTES ON FOOTINGS.

20. NOTES ON FOOTINGS.

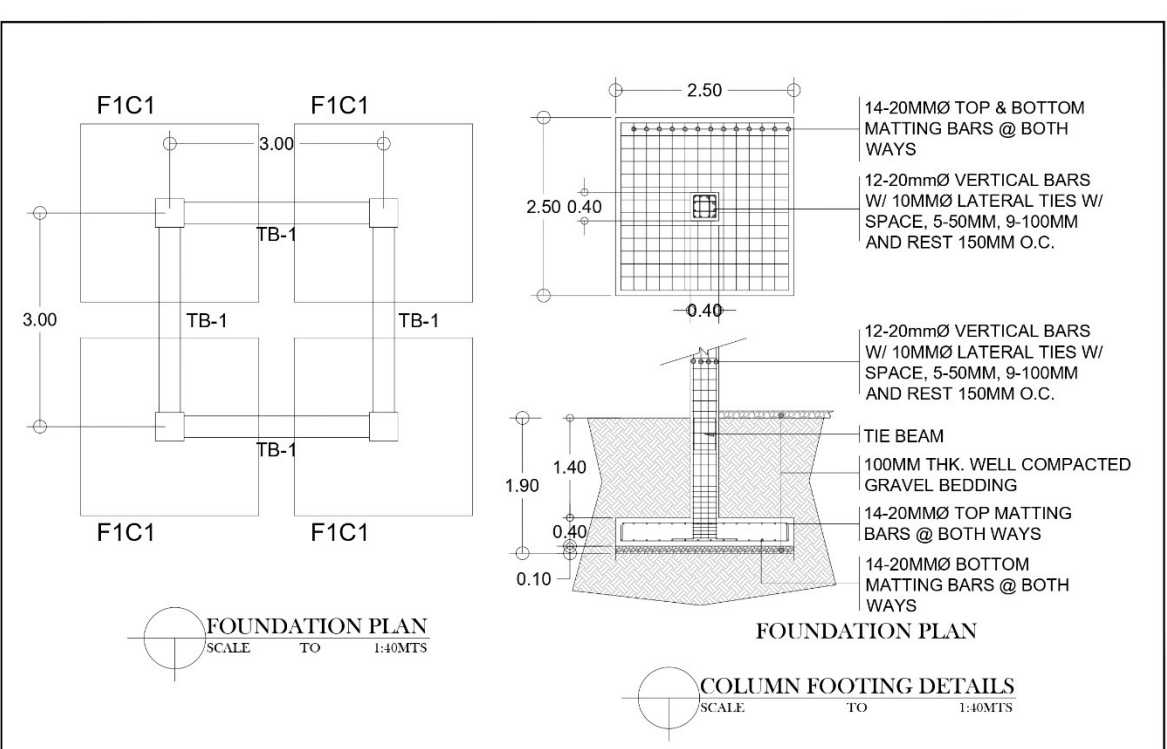
21. NOTES ON FOOTINGS.

22. NOTES ON FOOTINGS.

23. NOTES ON FOOTINGS.

24. NOTES ON FOOTINGS.

25. NOTES ON FOOTINGS.



 <small>LOGO/PROJECT/STATEMENT OF RESPONSIBILITY</small>	<small>ENDORSE/ISSUE</small> CONSTRUCTION OF REINFORCED CONCRETE WATER TANK STAND AT JHCSC PAGADIAN CAMPUS <small>DATE: _____</small>	<small>PREPARED BY</small> REYMARK E. CALAGO, CE <small>PROJECT ENGINEER</small>	<small>CHECKED AND SUBMITTED BY</small> PANGASIA (L) AMINTAS, CE <small>COLLEGE ENGINEER</small>	<small>RECOMMENDING AGENCIES</small> CLEOPHAR BANARUA, JR., PH.D. <small>PLANNING AND DEVELOPMENT DIRECTOR</small>	<small>APPROVED</small> EDGARDO H. ROSALES, EdD <small>JHCSC - PRESIDENT</small>	<small>SHEET NUMBER</small> AS SHOWN <small>OF</small> 5-2 25
---	--	---	---	---	---	--



VISION

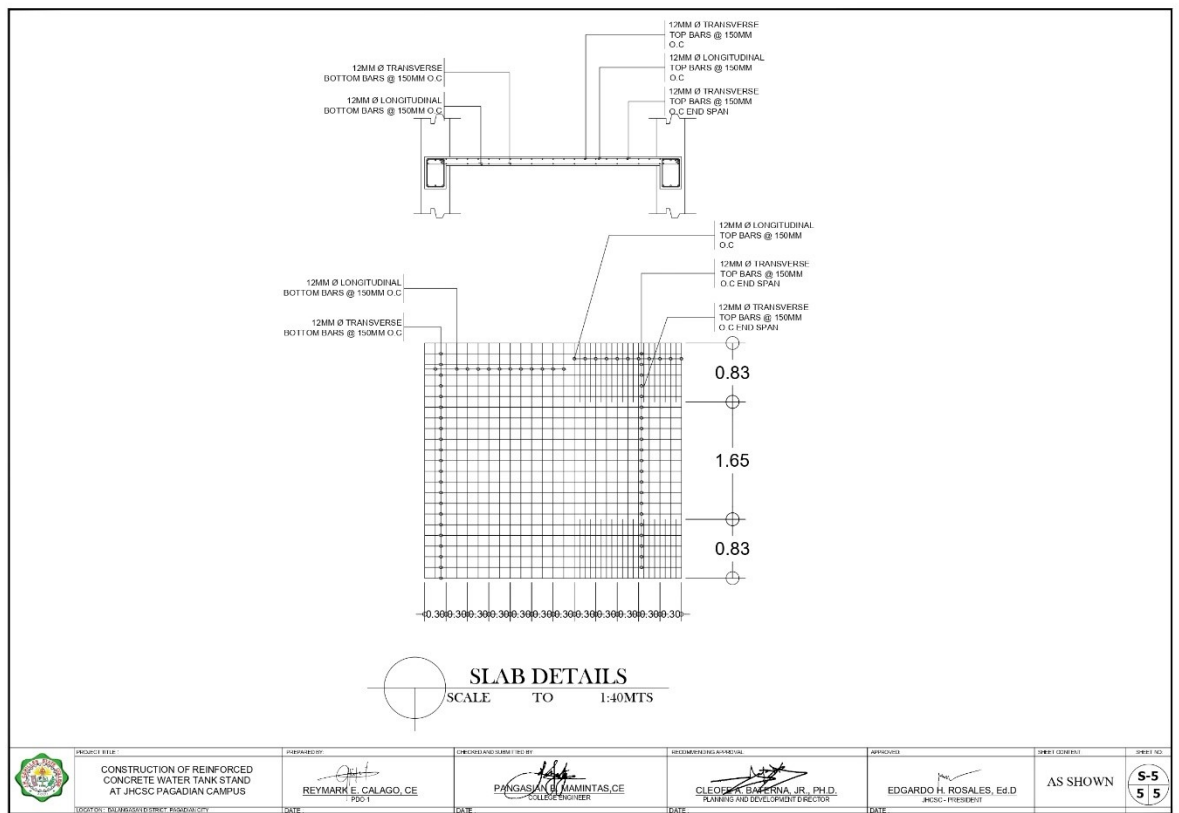
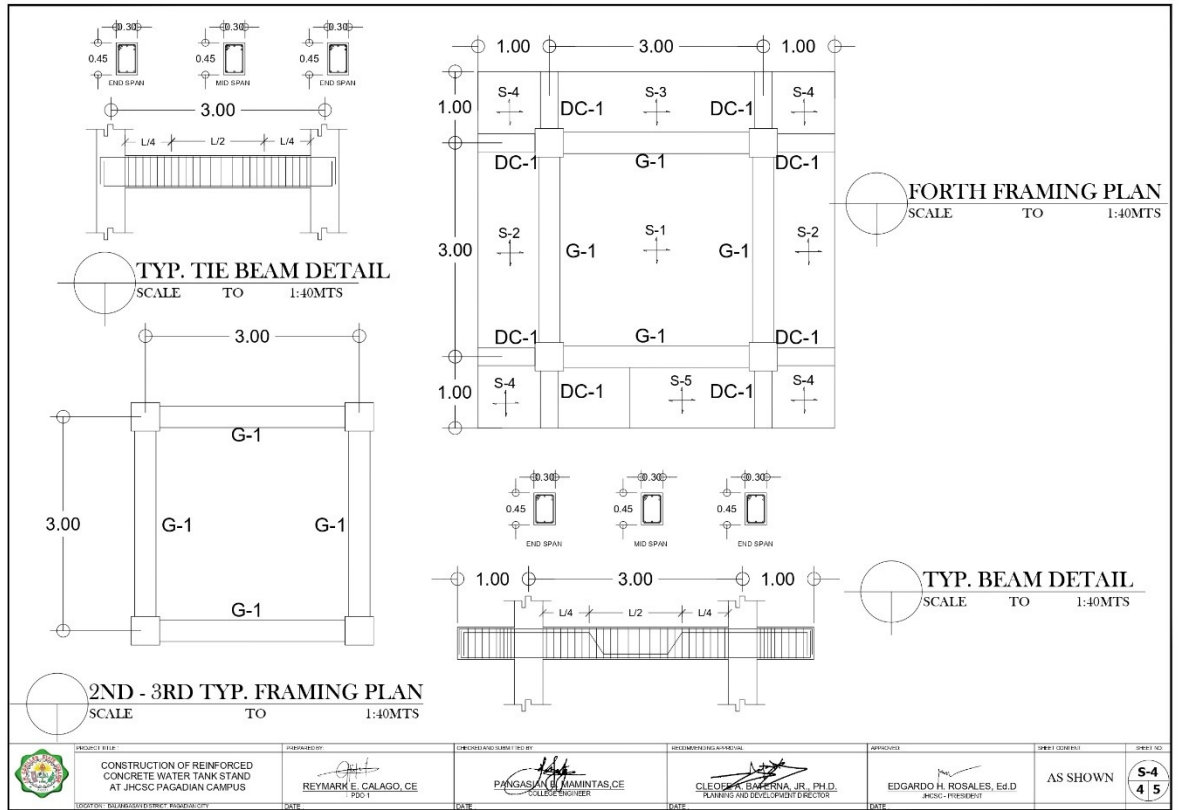
Leading higher education institution serving the ASEAN community with quality, innovative and culture-sensitive programs

MISSION

- Provides need-based tertiary and advanced programs in Agriculture, Education and allied fields;
- Undertakes applied research, extension and production services that yield - workable and durable solutions to sector specific challenges, thus improving the socio-economic well-being of identified communities

CORE VALUES

- Justice, Peace and Unity
- Hope, Honesty and Humility
- Credibility and Integrity
- Social Responsibility and Interfaith Dialogue
- Collaboration and Shared Competence





VISION

Leading higher education institution serving the ASEAN community with quality, innovative and culture-sensitive programs

MISSION

- Provides need-based tertiary and advanced programs in Agriculture, Education and allied fields;
- Undertakes applied research, extension and production services that yield - workable and durable solutions to sector specific challenges, thus improving the socio-economic well-being of identified communities

CORE VALUES

- J**ustice, Peace and Unity
- H**ope, Honesty and Humility
- C**redibility and Integrity
- S**ocial Responsibility and Interfaith Dialogue
- C**ollaboration and Shared Competence

Section VIII. Bill of Quantities	Section VIII. Bill of Quantities
Project Title: CONSTRUCTION OF WATER SUPPLY STRUCTURE AT JHCSC PAGADIAN CAMPUS	Project Title: CONSTRUCTION OF REINFORCED CONCRETE WATER TANK STAND AT JHCSC PAGADIAN CAMPUS
Section IX. Checklist of Technical and Financial Documents	Section IX. Checklist of Technical and Financial Documents
<p>I. TECHNICAL COMPONENT ENVELOPE <i>Technical Documents</i></p> <p>D. Duly signed Construction Schedule, S-Curve and PERT-CPM Network Diagram.</p>	<p>Removed from the checklist.</p>

JOEL M. SABELLANO JR., DVM
BAC Chairman